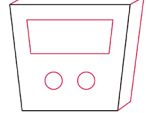
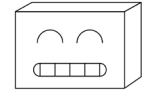
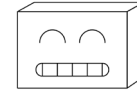
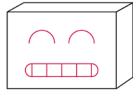


# DRAW YOUR OWN ROBOT!

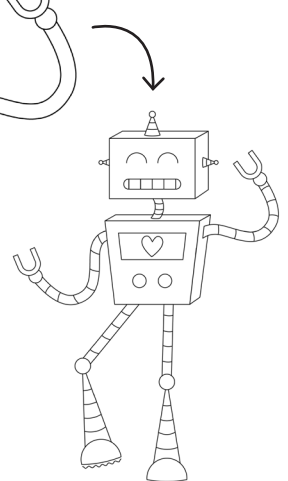
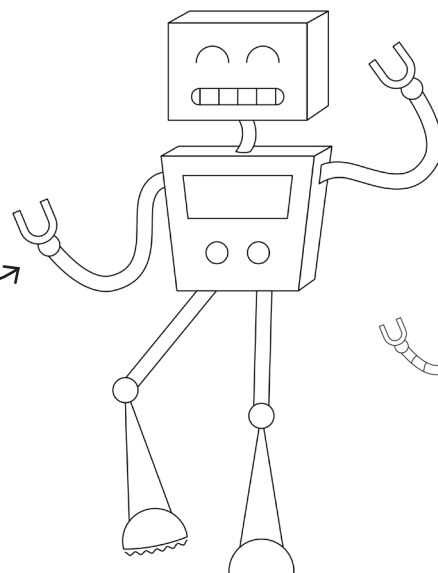
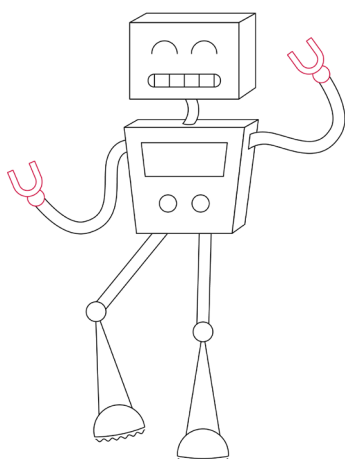
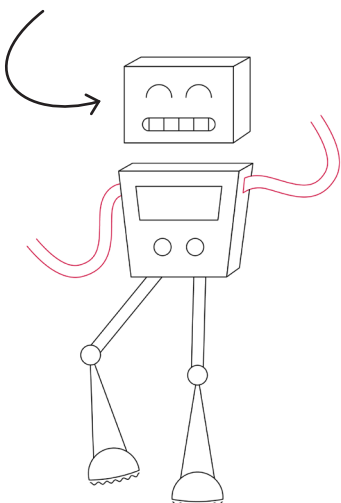


**Step 1:** Draw a rectangle for the head. Add three diagonal lines, starting at the outer edges of your rectangle. Join these lines up with straight lines – you should now have a 3d box!

**Step 2:** Draw two upside-down U shapes in the first rectangle to make the eyes. Add a smaller rectangle underneath, making the corners a bit more curved. Add vertical lines inside this rectangle – you should now have a mouth.

**Step 3:** Now for the body. Draw another rectangle shape beneath the head, but make the bottom of your rectangle smaller than the top, like a plant-pot. Follow the instructions from Step 1 to make this shape 3d as well. You can draw shapes inside the body now to make buttons or a screen – like we've done here.

**Step 4:** Now for the legs. Draw two circles beneath the head to make knees. Add two semi-circle shapes underneath these to make feet. Then, join these shapes up with two sets of lines for the legs. You can add more semi-circle shapes at the bottom of the feet to make wheels for your robot if you like.



**Step 5:** For the arms, draw two sets of swirly lines on either side of the body. Connect the two lines at the end with a U-shape, like a magnet. Add a neck to connect the head to the body by drawing two curved lines side by side. Then, connect these lines with a straight line at the bottom.

**Step 6:** And now you have your robot! Feel free to add extra details, such as antenna on the head or curved lines inside the arms and legs to make the robot's arms look extendable! Why not try experimenting with different shapes, by using triangles instead of rectangles for the head and body?